



Product Service

CERTIFICATE

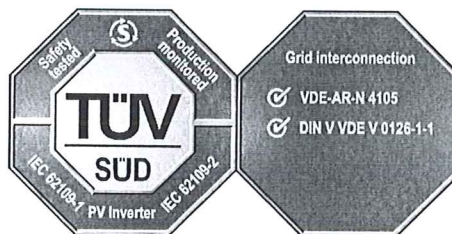
No. Z2 15 12 72237 091

Holder of Certificate: **Shenzhen INVT Electric Co., Ltd.**

No.4 Building, Gaofa Industrial Park
 Longjing, Nanshan District
 518055 Shenzhen
 PEOPLE'S REPUBLIC OF CHINA



Certification Mark:

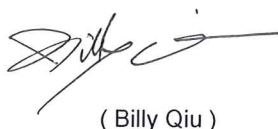


Product: **Converter
 (PV grid-interactive inverter)**

The product was tested on a voluntary basis and complies with the essential requirements. The certification mark shown above can be affixed on the product. It is not permitted to alter the certification mark in any way. In addition the certification holder must not transfer the certificate to third parties. See also notes overleaf.

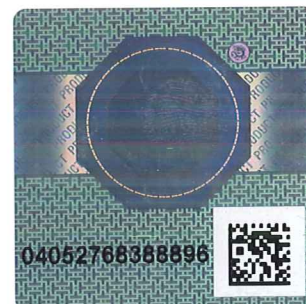
Test report no.: 64290150166001

Valid until: 2020-12-06


 (Billy Qiu)

Date, 2015-12-09

Page 1 of 3





Product Service

CERTIFICATE

No. Z2 15 12 72237 091

Model(s):

iMars MG4KTL, iMars MG4K6TL, iMars MG5KTL,
iMars MG3KTL-2M, iMars MG4KTL-2M,
iMars MG4K6TL-2M, iMars MG5KTL-2M

Parameters:

Vmax PV:	600 Vd.c.
Isc PV:	See page 3
Max. continuous output current:	See page 3
Nominal active power Pn:	See page 3
Maximum active power PEmax:	See page 3
Maximum apparent power SEMax:	See page 3
Nominal AC frequency:	50 Hz
Nominal AC voltage:	230 Va.c.
Power factor (adjustable):	0,95under-excited to 0,95over-excited
Protective class:	I
Ingress protection:	IP65
Remark:	Additional test summary of VDE-AR-N 4105 F.3 & F.4 are attached at the end of the technical report.

Tested according to:

IEC 62109-1(ed.1)
EN 62109-1:2010
IEC 62109-2(ed.1)
EN 62109-2:2011
DIN VDE 0126-1-1:2013
VDE-AR-N 4105:2011
DIN VDE V 0124-100:2012

Production Facility(ies):

77238



Product Service

CERTIFICATE

No. Z2 15 12 72237 091

Model	iMars MG4KTL	iMars MG4K6TL	iMars MG5KTL
Isc PV	18 Ad.c	20 Ad.c	22 Ad.c
Max. continuous output current	16 Aa.c	18,3 Aa.c	20 Aa.c
Maximum apparent power $S_{E_{max}}$	3899 VA	4450 VA	4599 VA
Maximum active power $P_{E_{max}}$	3688 W	4211 W	4559 W
Nominal active power P_n	3680 W	4200 W	4600 W

Model	iMars MG3KTL-2M	iMars MG4KTL-2M	iMars MG4K6TL-2M	iMars MG5KTL-2M
Isc PV	2x9 Ad.c	2x11 Ad.c	2x12 Ad.c	2x14 Ad.c
Max. continuous output current	14 Aa.c	16 Aa.c	18,3 Aa.c	20 Aa.c
Maximum apparent power $S_{E_{max}}$	3182 VA	3899 VA	4450 VA	4599 VA
Maximum active power $P_{E_{max}}$	3013 W	3688 W	4211 W	4559 W
Nominal active power P_n	3000 W	3680 W	4200 W	4600 W

Test report no.: 64290150166001

Date, 2015-12-09

Page 3 of 3